

## Floor box system: 8908B

### Specification:

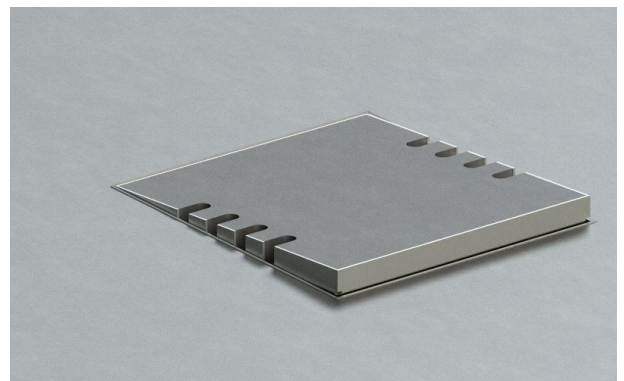
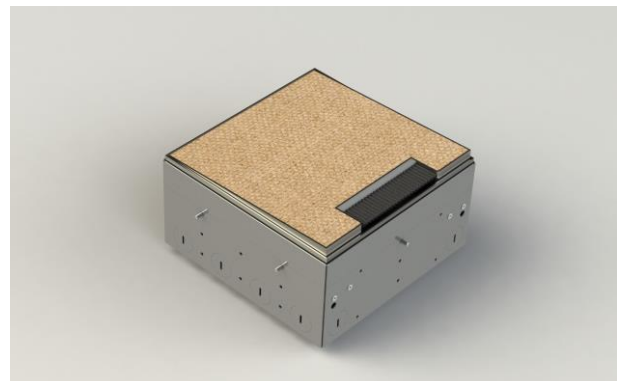
Item No:	8908B
Product line:	Floor box system
Units:	8
Mounting (qty):	8x SCHUKO socket with VDE certification
Construction:	Square
Ground:	Suitable for screed
Type of inst.:	Flush mounted
Lid character.:	<ul style="list-style-type: none"> <li>• Own floor covering applicable</li> <li>• Hinged</li> <li>• Removable</li> <li>• Closable with plugged in plugs</li> </ul>
Floor cover. recess:	15mm
Environment:	Dry to moist
Protection:	IP20
EAN:	4058796002797

### Technical data:

Material:	<ul style="list-style-type: none"> <li>• Adapter box made of galvanized steel sheet</li> <li>• Lid made of stainless steel (1,5mm / 1.4301)</li> <li>• Equipment carrier made of aluminum</li> </ul>
Colour:	Stainless steel
Surface:	Grindet
Weight:	2800g
Dimensions:	211 x 205 x 103mm
Install. Dim.:	211 x 205 x 103mm
Height-adjustable:	30mm
Supply line:	4x front; 4x lateral; 4x back; 4x bottom; Ø 25mm
Load:	120kg

### Features:

Delivery cond.:	Complete and pre-assembled
Opt. attachments:	Item No. 89NS -Leveling kit for height correction



Errors and technical changes reserved.