

Floor socket: 9904A

Specification:

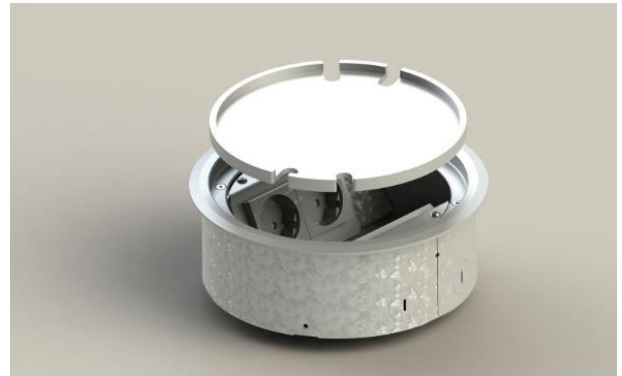
Item No:	9904A
Product line:	Floor socket
Units:	4
Mounting (qty):	4x SCHUKO socket with VDE certification
Construction:	Round
Ground:	<ul style="list-style-type: none"> • Suitable for screed • Suitable for hollow floor
Type of inst.:	Flush mounted
Lid character.:	<ul style="list-style-type: none"> • Own floor covering applicable • Removable • Closable with plugged in plugs
Floor cover. recess:	6mm
Environment:	Dry to moist
Protection:	IP20
EAN:	4058796004968

Technical data:

Material:	<ul style="list-style-type: none"> • Frame made of solid aluminum • Housing made of galvanized steel sheet • Lid made of solid aluminum • Equipment carrier made of aluminum
Colour:	Aluminum (nature)
Surface:	Anodised
Weight:	3000g
Dimensions:	ø 220 x 80mm
Install. Dim.:	ø 205 x 76mm
Supply line:	4x lateral; 4x bottom; Ø 25mm
Load:	200kg

Features:

Delivery cond.:	Complete and pre-assembled
Opt. attachments:	Item No. 12106 - EPS insert



Errors and technical changes reserved.