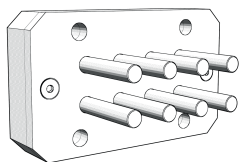
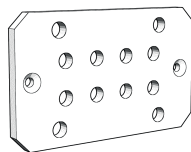


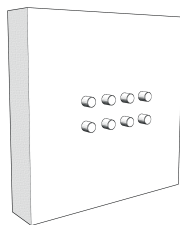
## Instructions de montage



Mécanisme

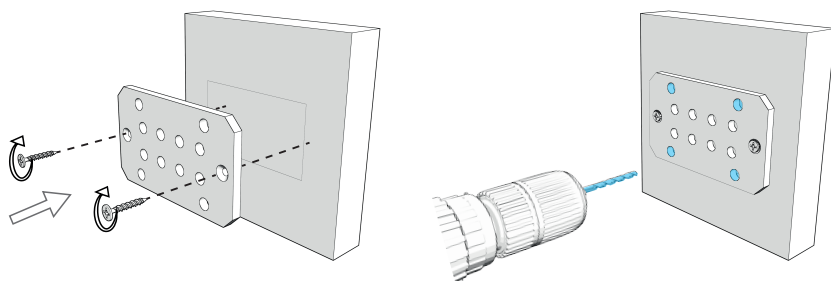


Gabarit

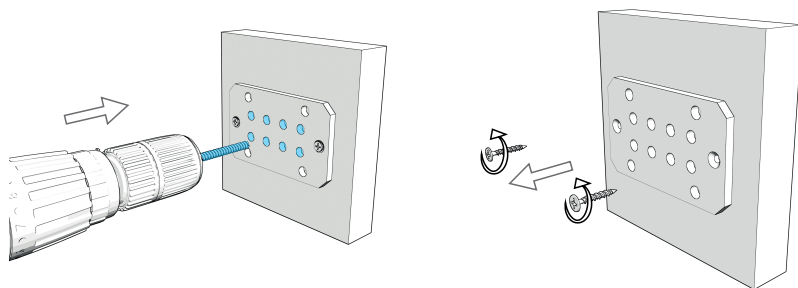


Lambris 20 mm

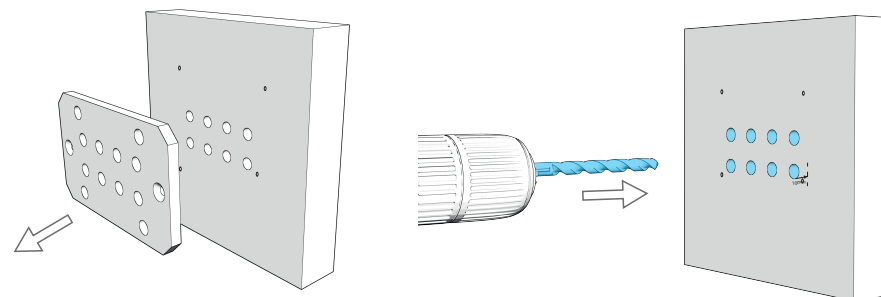
Placez le gabarit en vous assurant qu'il est de niveau puis vissez-le au panneau. Prépercez ensuite les trous pour les vis du mécanisme DoT avec une mèche de 2,5 mm.



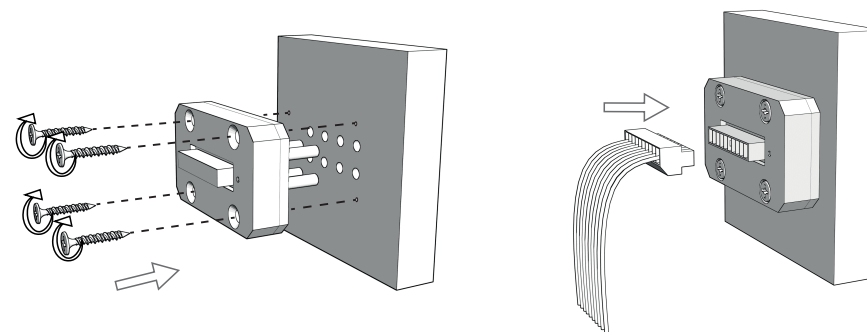
Faites les trous pour les boutons en vous aidant du gabarit. Veuillez à utiliser une mèche de 5,5 mm



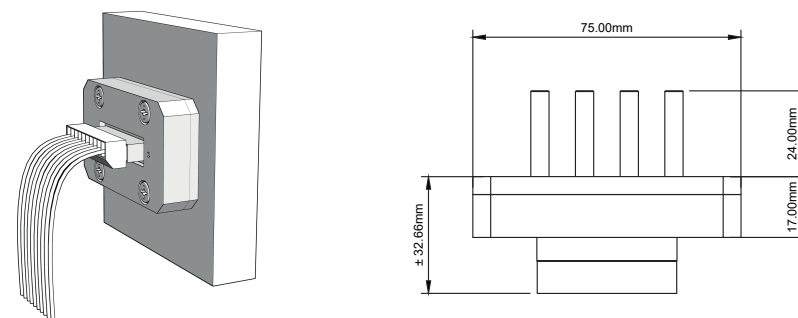
Retirez le gabarit. Puis élargissez les trous avec une mèche de 6,5 mm sur une profondeur de 10 mm. Cette opération est essentielle pour offrir un dégagement nécessaire au bon coulissement du bouton.



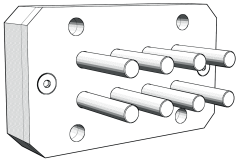
Fixez le mécanisme au dos du lambris avec des vis à bois. Branchez le connecteur au mécanisme DoT.



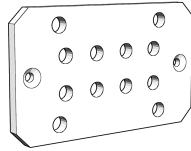
## Dimensions du DoT



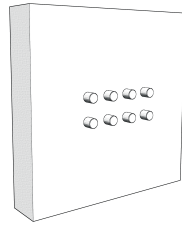
## Assembly instructions



Mechanism

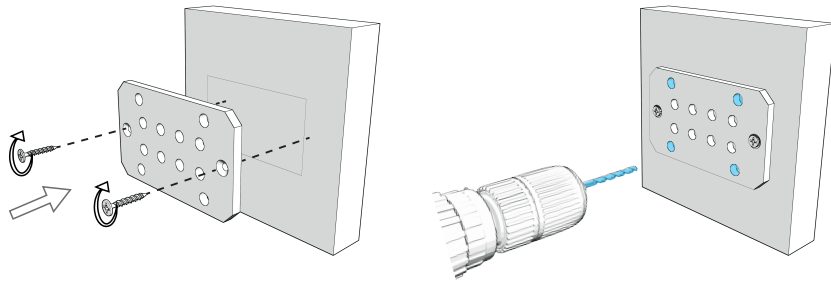


Template

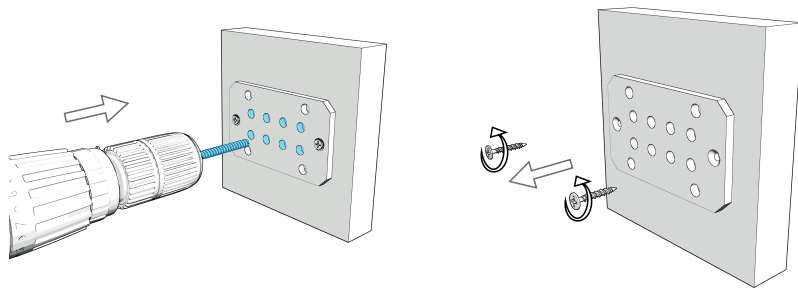


Lambris 20mm

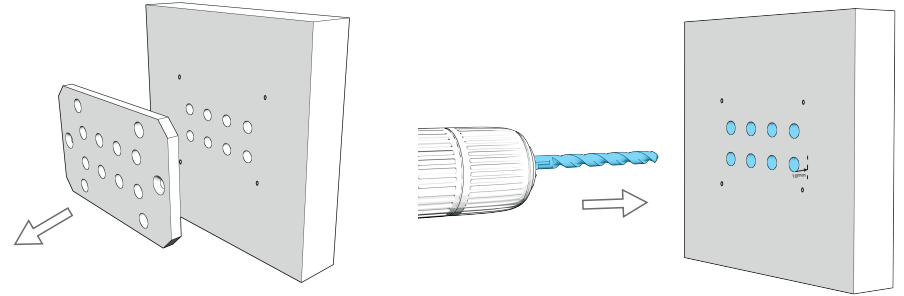
Place the template while making sure it is level then screw it to the panel.  
Then drill the holes for the DoT mechanism with a 2.5mm drill bit.



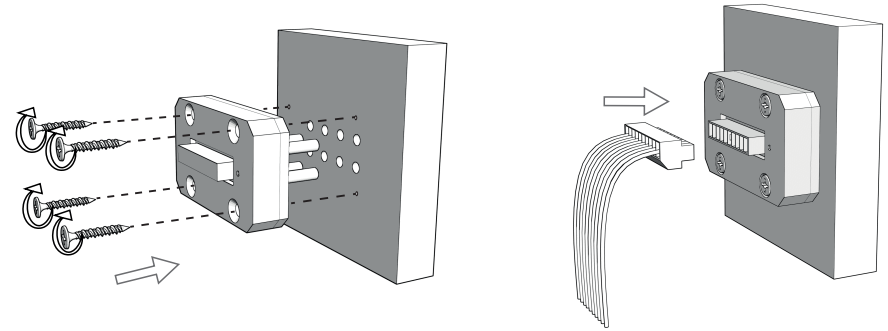
Make the holes for the buttons using the template. Use a 5.5mm drill bit



Remove the template. Then enlarge the holes with a 6.5 mm drill bit to a depth of 10 mm.  
This is essential to provide the necessary clearance for the knob to slide out properly.



Fix the mechanism to the back of the panelling with wood screws.  
Plug the connector to the mechanism.



## DoT dimensions

