

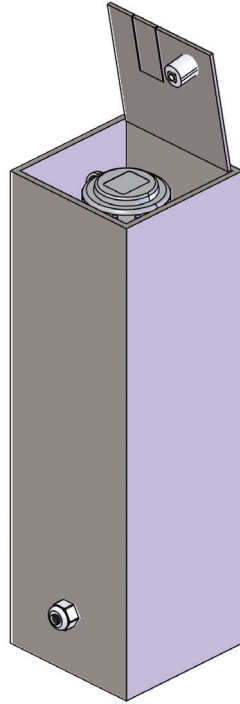


FLY BOX

RETRACTABLE
POWER TOWER

FOR DISTRIBUTION
OF ENERGY AND SERVICES

FLY BOX



MECHANICAL SPECS

distribution of energy and other services, entirely made of AISI304 stainless steel with its 125kN stainless steel* cover with almond finish completed with cable outlet to allow to use the unit with its cover closed. Manual lifting with its square key and closing guaranteed by a AISI304 stainless steel bronzed bayonet lock. Dimensions 120x120mm, h400mm.

ELECTRICAL SPECS

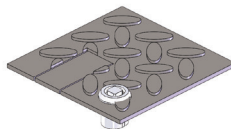
IP67/IP68 SCHUKO fly socket, compliant with the declaration of conformity VDE and EAC (SCHUKO socket) and with the declaration of conformity IEC 60309-2, IEC 60309-1, IEC 60529, IK08 EN 62262, 850 °C IEC 60695-2-1 (industrial sockets).

IP68 fly SCHUKO socket - Completed with bayonet lock lid attached by a strap, for cables up to 3 x 2.5 mm², up to H07RN-F.

Standard contact and connection with screw terminals.

IP67/IP68 industrial fly sockets - Cable gland and external cable grip. Highly heat resistant contact carrier and connection with screw terminals.

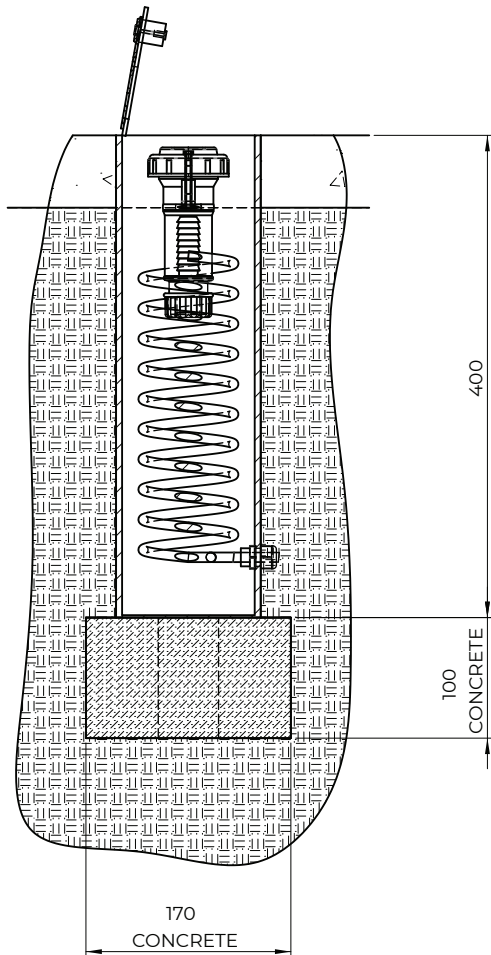
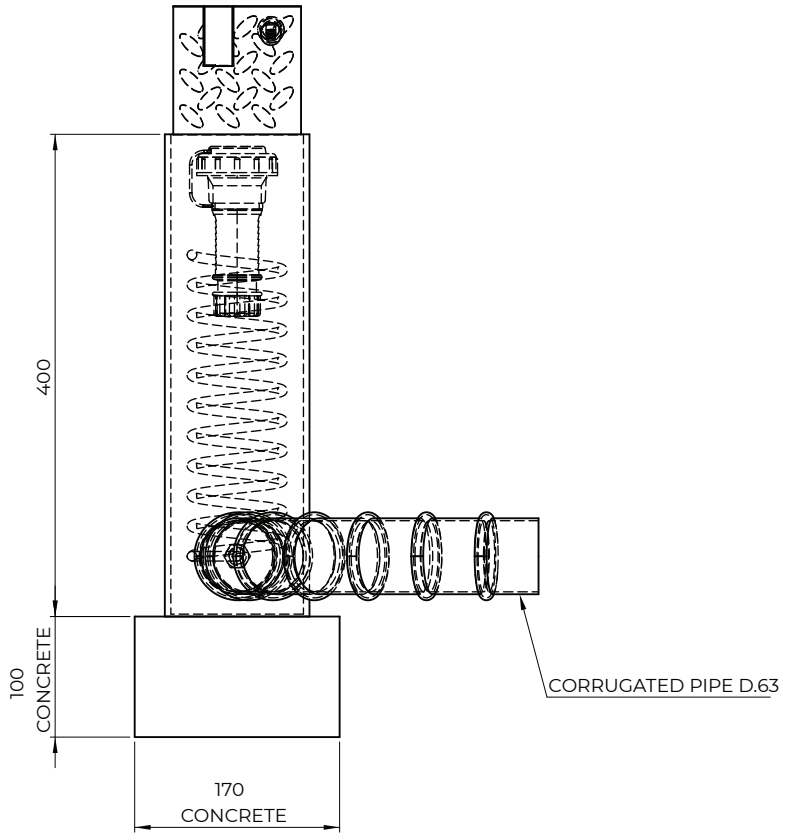
AVAILABLE COVERS



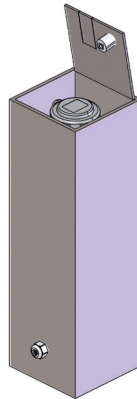
**125kN STAINLESS STEEL*
COVER with ALMOND
FINISH**

* electro pickling and electropolishing with passivation of stainless steel treatment to finish and clean the covers from welding marks

Technical drawing (example)



EQUIPMENTS
FLY BOX



SUITABLE FOR
indoors, both private
and showrooms or porches

FLY BOX - A

01 SCHUKO fly socket

FLY BOX - B

01 2P+E fly socket

FLY BOX - C

01 3P+N+E 16A fly socket

FLY BOX - D

01 3P+N+E 32A fly socket



WWW.VMRSRL.COM

NEW VMR S.R.L.

VIA LARIO 31, 22060 CANTÙ (CO) ITALY

+39 031 704673 | 031 7090081

INFO@VMRSRL.COM

P.IVA 03230340139