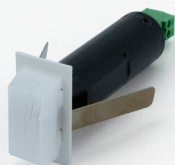
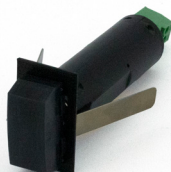


TENSE



White KNX Motivity Line



Black KNX Motivity Line

White KNX Motivity Line

Code: KNX_MOTLIW

Motion Detection
Temperature Sensor
Registers Brightness

Black KNX Motivity Line

Code: KNX_MOTLIB

Motion Detection
Temperature Sensor

SPECIFICATIONS

Power supply: **min. 21 V DC max 31 V DC** supplied by the KNX bus line

Maximum power consumption: **240 mW**

Connection to the bus: **pluggable** terminal

Operating temperatures: **-5 °C to +45 °C**

Maximum humidity: **93% relative humidity**, no moisture condensation

Type of protection (EN 60529): **IP20** (installed in ceiling)

Dimensions in mm (w x h): **32 x 89** mm

INSTALLATION INSTRUCTIONS:

1. **Remove power** from the KNX bus.
2. **Drill a hole of 18 mm** and pull the cable out & strip it.
3. In case the hole is nicely drilled, **cut off** the white/black plastic **rosette** from the Motivity Ceiling; to personal taste.
4. **Connect** the Motivity with the **KNX bus** using the KNX connector. Connect the **red bus** wire to the terminal labelled with **(+)** and the **black bus** wire to the terminal labelled with **(-)**
5. **Slide** the Motivity Line **in the drilled hole** and **gently push** it in until it is **level** with the ceiling.
6. **Re-power** the KNX bus.
7. **Place** the delivered ring **magnet** over the sensor head.
8. Make sure the red programming **LED lights up**.
9. In ETS, add the device and **assign the physical address**.
10. **Program** the physical address to the device.
11. In ETS, select the appropriate parameters and **assign the group addresses**.
12. **Download** the application program to the device.

MOTIVITY LINE



The Motivity Line of Tense is the **smallest KNX line detector** in the Tense range.

It is a **motion detector** with **integrated temperature** and **integrated light sensor** (white version only). With the internal sensor (or using an external one), the integrated thermostat can be used to **control the room temperature**.

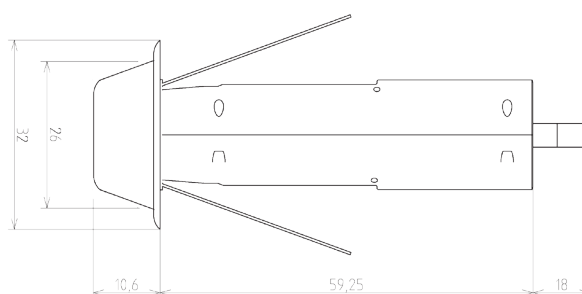
The Motivity Line is most useful when a narrow & long zone needs detection. It is ideal to install in staircase, hallways, dressings, alongside the bed...

Its output function and behaviour are **programmable** by setting the appropriate parameters in **ETS**. It supports **switching, dimming and setting scenes** for up to four selectable output blocks. Additionally it also has a **scene module, programmable logic ports, timer and up/down counter** functionality.

Mounted in the ceiling or wall, this ultra-small sensor has a **35°** view, a minimal **angle of 150°** and a detection diameter shown in the table on the left hand side. It is centrally **installed in the wall or ceiling by drilling an 18 mm hole**.

The white or black **plastic rosette** can be **easily cut off** if the hole in the ceiling is professionally drilled.

- The Motivity Line is equipped with an **infrared movement detector**.
- An internal **temperature sensor** with correction.
- The Motivity Line has an internal **light sensor** which can be corrected through **calibration with a photometer**. The light sensor of the white Motivity Line has a **light read out value**.
- With the **master/slave mode** it is possible for the Motivity Line and other devices to control the action of the device programmed as master.
- Up to **four different output actions** available which can be independently activated on certain conditions. Possible output actions: **switching, dimming, recalling scenes, 1 or 2 Byte unsigned value, up/down, programmable logic ports...**
- The Motivity Line has been equipped with a **switch-off delay**.
- It is possible to **control your ventilation** through the Motivity Line.
- **Blocking object**.



Detailed Drawing

PROJECTION ZONE

The Motivity Line detects up until a distance of 5m. Absence or presence of detection cannot be guaranteed for a detection length of over 5m. Detection might thus occur over 5m.

The projection zone of the Motivity Plus has an epleptical shape. The x-axis and y-axis have a different diameter. Below the projected detection zone per meter height is depicted both graphically and schematically.

INSTALLATION HEIGHT	ELEPTICAL AXIS X	ELEPTICAL AXIS Y
1.00 m	3.20 m	0.45 m
2.00 m	6.40 m	0.90 m
3.00 m	8.00 m	1.30 m
4.00 m	6.00 m	1.80 m
4.80 m	2.60 m	2.15 m

GRAPHICAL REPRESENTATION

