

# TENSE



White NOC Motivity Ceiling



Black NOC Motivity Ceiling

White NOC Motivity Ceiling  
Code: NOC\_MOTIW

Motion Detection

Black NOC Motivity Ceiling  
Code: NOC\_MOTIB

Motion Detection

## SPECIFICATIONS

Power supply: **12 V DC**

Maximum power consumption: **11mA/12VDC**

Connection: **normally open potential free contact**

Operating temperatures: **-5 °C to +45 °C**

Maximum humidity: **93% relative humidity**, no moisture condensation

Type of protection (EN 60529): **IP20** (installed in ceiling)

Dimensions in mm (w x h): **17.5 x 75 mm**

## INSTALLATION INSTRUCTIONS:

1. **Remove Power** from the system.
2. **Drill a hole of 18 mm** and pull the cable out of the ceiling.
3. Connect the wires to those of the system by **soldering**.
4. Put **heat shrinks** over each individual wire of the Motivity Ceiling to isolate connections.
5. **Repower** the system.
6. **Assign** the desired **function** to the Motivity Ceiling by turning the **dipswitch** to the correct setting. See technical data sheet for more information.
7. In case the hole is nicely drilled, **cut off** the white/black plastic **rosette** from the Motivity Ceiling; to personal taste.
8. **Slide** the Motivity Ceiling **in the drilled hole** and **gently push** it in **until** it is **level** with the ceiling.

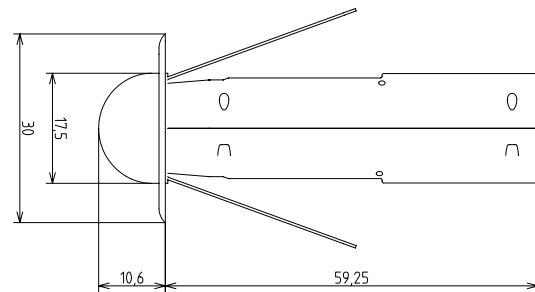
## MOTIVITY CEILING

12 V  
DC

The Motivity Ceiling of Tense is the **smallest NOC motion detector** in the Tense range.

Mounted in the ceiling, this ultra-small ultrared movement sensor has a **360°** view, a minimal **angle of 93°** and a detection diameter shown in the table on the left hand side. It is centrally **installed in the ceiling by drilling an 18 mm hole**.

The white or black **plastic rosette** can be **easily cut off** if the hole in the ceiling is professionally drilled.



Detailed Drawing

## PROJECTION ZONE

The Motivity Ceiling detects up until a distance of 10m. Absence or presence of detection cannot be guaranteed with a detection length of over 10m. Detection might thus occur over 10m.

The projection zone of the Motivity Ceiling has an elliptical shape. The X-axis and y-axis have a different diameter. Below the projected detection zone per meter height is depicted both graphically and schematically.

INSTALLATION HEIGHT	ELEPTICAL AXIS X	ELEPTICAL AXIS Y
1.00 m	3.08 m	2.30 m
2.00 m	6.16 m	4.70 m
3.00 m	9.24 m	6.90 m
4.00 m	12.32 m	9.20 m
5.00 m	15.40 m	11.50 m
6.00 m	16.00 m	13.80 m
7.00 m	14.30 m	14.30 m
8.00 m	12.00 m	12.00 m
9.00 m	8.70 m	8.70 m

## GRAPHICAL REPRESENTATION

