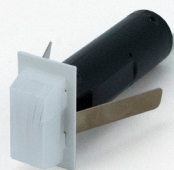


TENSE



White NOC Motivity Line



Black NOC Motivity Line

White NOC Motivity Line
Code: NOC_MOTLIW

Motion Detection

Black NOC Motivity Line
Code: NOC_MOTLIB

Motion Detection

SPECIFICATIONS

Power supply: **12 V DC**

Maximum power consumption: **11mA/12VDC**

Connection: **normally open potential free contact**

Operating temperatures: **-5 °C to +45 °C**

Maximum humidity: **93% relative humidity**, no moisture condensation

Type of protection (EN 60529): **IP20** (installed in ceiling)

Dimensions in mm (w x h): **32 x 89** mm

INSTALLATION HEIGHT	± DETECTION WIDTH X	± DETECTION WIDTH Y
1.00 m	0.40 m	7.40 m
2.00 m	0.80 m	9.20 m
3.00 m	1.30 m	8.00 m
4.00 m	1.73 m	6.00 m
4.50 m	1.90 m	2.10 m

INSTALLATION INSTRUCTIONS:

1. **Remove Power** from the system.
2. **Drill a hole of 18 mm** and pull the cable out of the ceiling.
3. Connect the wires to those of the system by **soldering**.
4. Put **heat shrinks** over each individual wire of the Motivity Line to isolate connections.
5. **Repower** the system.
6. **Assign** the desired **function** to the Motivity Ceiling by turning the **dipswitch** to the correct setting. See technical data sheet for more information.
7. In case the hole is nicely drilled, **cut off** the white/black plastic **rosette** from the Motivity Ceiling; to personal taste.
8. **Slide** the Motivity Ceiling **in the drilled hole** and **gently push** it in **until it is level** with the ceiling.

MOTIVITY LINE

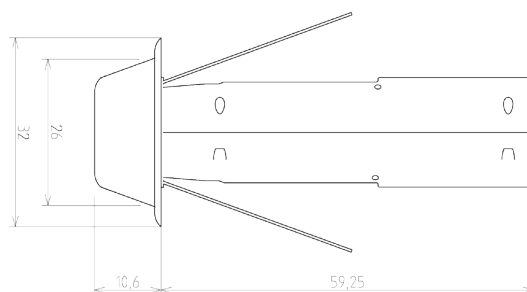
12 V
DC

The Motivity Line of Tense is the **smallest NOC line detector** in the Tense range.

The Motivity Line is most useful when a narrow & long zone needs detection. It is ideal to install next to a staircase, in hallways, dressings, alongside the bed...

Mounted in the ceiling or wall, this ultra-small movement sensor has a **35°** view, a minimal **angle of 150°** and a detection diameter shown in the table on the left hand side. It is centrally **installed in the wall or ceiling by drilling an 18 mm hole**.

The white or black **plastic rosette** can be **easily cut off** if the hole in the ceiling is professionally drilled.



Detailed Drawing

PROJECTION ZONE

The Motivity Line detects up until a distance of 5m. Absence or presence of detection cannot be guaranteed for a detection length of over 5m. Detection might thus occur over 5m.

The projection zone of the Motivity Plus has an epleptical shape. The x-axis and y-axis have a different diameter. Below the projected detection zone per meter height is depicted both graphically and schematically.

INSTALLATION HEIGHT	ELEPTICAL AXIS X	ELEPTICAL AXIS Y
1.00 m	3.20 m	0.45 m
2.00 m	6.40 m	0.90 m
3.00 m	8.00 m	1.30 m
4.00 m	6.00 m	1.80 m
4.80 m	2.60 m	2.15 m

GRAPHICAL REPRESENTATION

